



THE COLLECTION

PROFESSIONAL DRESSING FOR THE WORKPLACE



**BUSINESSWEAR
HOSPITALITYWEAR
OUTERWEAR**

**CHEFSWEAR
BEAUTY & SALON
HEALTHCARE**



PR122



CONTENTS

Our Sustainability Journey	4 - 5
Ethical Policy	6
What's New in 2023	7
Outerwear	8 - 23
Shirts & Blouses	24 - 43
Ties & Scarves	44 - 48
Knitwear	49 - 54
Trousers, Chinos & Shorts	55 - 60
Polo Shirts	61 - 73
Casual Shirts & Tees	74 - 89
Waistcoats	84 - 85
Aprons & Tabards	90 - 129
Chefswear	130 - 147
Beauty & Salonwear	148 - 157
Healthcare	158 - 159
Size Guide	160 - 161
Index	162 - 163

Front cover:

Models wear PR234 & PR334 Oxford Shirts, page 38

Featured left:

Models wear PR122 'Regenerate' Apron, page 92 with
PR219 & PR319 'Comis' Tees, page 86

OUR SUSTAINABILITY JOURNEY

RESPONSIBLE COTTON SOURCING

Where we can, we source cotton that has been grown organically, using less water and without toxic pesticides.

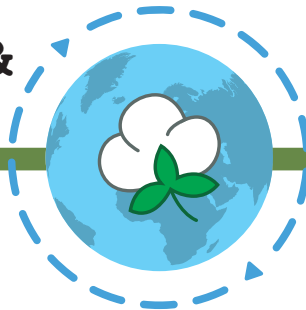


BETTER PACKAGING

We are reducing the amount of packaging for our products and use recycled, compostable and bio-degradable solutions where we can.

MEMBERSHIPS & ASSOCIATIONS

We are a members of Better Cotton™ and also support Fairtrade® farmers by purchasing their cotton.



COMMUNITY ENGAGEMENT

It's important to us to give back, which is why we donate and sponsor charities that benefit the communities where our products are made.

REUSING PLASTICS



The recycled polyester in our garments comes from post-consumer raw material, like plastic bottles.



SOCIAL COMPLIANCE

The people who make our garments work in factories that are audited to ensure ethical, social and environmental standards are maintained.



GREENER TRANSPORT



We are striving to improve the way we import our goods into Europe and are working with key transportation partners to monitor and reduce the CO₂ levels we produce.

SHARED VALUES



Our network of distributors and official resellers share our values for a more sustainable supply chain and are trusted to promote these values.

For more information about our sustainability journey, visit our website, www.premierworkwear.com

ETHICAL POLICY

PEOPLE, PRODUCTION & THE PLANET

ETHICAL PRODUCTION

Our manufacturing facilities and supply chains are certified by some of the world's leading organisations. This allows us to monitor and assess workplace standards by working closely with our suppliers encouraging continuous improvements.



PRODUCT CERTIFICATION

Selected products carry certifications to back up our sustainability claims.



Certified by Control Union
CBCUC-1119398



Certified by Control Union
CBCUC-1119398



Certified by Control Union
CBCUC-1119398

INITIATIVES & ASSOCIATIONS

We are proud members of Better Cotton™ and we support Fairtrade® farmers by purchasing their cotton.



WHAT'S NEW FOR 2023

Welcome to Premier's uniform collection for 2023, where we have built on our successes in the hospitality and corporatewear markets and introduced a line of outerwear that is designed to complement key styles in these areas.

SOFTSHELL JACKETS & GILETS

Launched in late 2022, our softshell jackets and gilets are already proving to be a popular choice with customers. Developed with our Windchecker® trademark for wind and water resistance, these two-layer softshells offer a printable surface and are made entirely from 100% recycled polyester.

PADDED JACKETS & GILETS

Our 'Recyclight' jackets and gilets are padded for warmth but are also incredibly lightweight at the same time. As the name suggests, these styles are made from recycled materials with the padded design giving a fashionable high-street inspired look.

'ARTISAN' FLEECE JACKET

Following the popularity of our 'Artisan' Fleece Gilet, we are pleased to launch a full sleeve version. These zip-through jackets are styled in the

same way, with a pleasing contrast trim framing the collar, zip and cuffs. We've brought these out in the same five colourways as the gilet, so you can mix and match between styles for a great look.

SHORTS

For those who are encouraged to take a more casual approach to their workwear, we have introduced some shorts. Proving to be a great solution in the warmer weather, these shorts are good choice for those who work in roles where trousers can be restrictive to movement. Discover his and her chino shorts, with a cargo short option.

COLOUR ADDITIONS

Look out for new colours that have been added to our popular PR154 and PR155 'Colours Collection' Aprons, alongside our PR144 'Annex' Oxford Bib Apron.



OUTERWEAR

A PROFESSIONAL APPROACH ALL YEAR ROUND

We are pleased to present a number of outerwear styles that co-ordinate perfectly with your uniform so you can achieve a smart approach all year round. Full sleeve jackets are complemented by matching gilets, with softshell, padded and fleece options, all suitable for a spot of company branding.





PR808

PR809

WINDCHECKER® PRINTABLE & RECYCLED SOFTSHELL JACKET

Windchecker® Printable & Recycled Softshell Jacket ■ Two layer zip through jacket with chin guard, Zipped side pockets, Hook 'n' loop strip to the cuffs, Elastic drawcord to the hem, Bonded fleece inner layer
 ■ 100% Recycled Polyester, 280gsm, 3 colours.

PR810 Men's sizes: S/35" – 4XL/53" ■ **PR812** Women's sizes: XS/8 – 2XL/18



Contains 100% GRS Certified Recycled Post Consumer Polyester
 Certified by Control Union
 C.U. CUC-119398



Printability
 Perfect base for all types of print applications

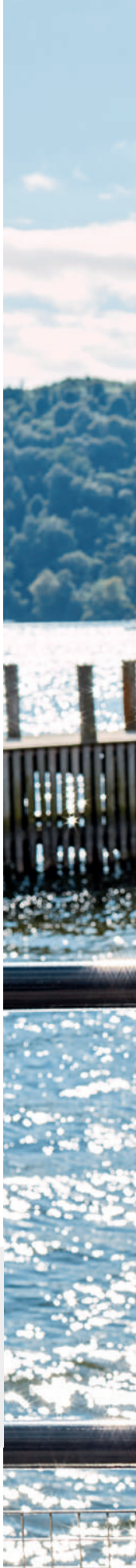
Recycled fabric
 Polyester made from post-consumer plastics



Softshell outer layer
 for wind and water resistance



Fleece inner layer
 for warmth and softness





PR810

NEW

PR812

NEW



PR816

PR814



▪ Chin guard



▪ Zipped side pockets

WINDCHECKER[®] PRINTABLE & RECYCLED GILET

Windchecker[®] Printable & Recycled Gilet ▪ Two layer zip through gilet with chin guard, Zipped side pockets, Elastic drawcord to the hem, Bonded fleece inner layer

- 100% Recycled Polyester, 280gsm, 3 colours.

PR814 Men's sizes: S/35" – 4XL/53"

PR816 Women's sizes: XS/8 – 2XL/18



© Textile Exchange
Contains 100% GRS Certified Recycled Post-Consumer Polyester
Certified by Control Union
CB-CUC-1119398

Printability

Perfect base for all types of print applications

Recycled fabric

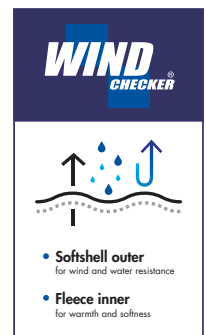
Polyester made from post-consumer plastics



BLACK

NAVY

DARK GREY



SPUN DYED RECYCLED ZIP-THROUGH SWEAT

Spun dyeing uses less water, chemicals and carbon compared to traditional methods.

Spun Dyed Recycled Zip-Through Sweat ■ Made with spun dyed recycled polyester yarn, Contrast zip detail, Two external zipped pockets, High neck cadet collar ■ 100% Recycled Polyester, 280gsm, 3 colours.

PR808 Men's sizes: S/35" – 4XL/53"

PR809 Women's sizes: XS/8 – 2XL/18



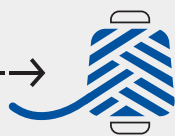
Contains 100% GRS Certified Recycled Post Consumer Polyester
Certified by Control Union
CB-CUC-1119398



Plastic bottles broken down into chips.



Colour dye added



Melted down and spun into yarn



Fabric to make our spun dyed garments



PR808



PR809





NEW



PR811

PR815

 **RECYCLIGHT™**



▪ Made from 100% recycled nylon and polyester



▪ Two zippered side pockets

PREMIER[®]
UNIFORMS THAT WORK FOR YOU

'RECYCLIGHT'[®] PADDED GILET

'Recyclight'[®] Padded Gilet ▪ Zip-through padded gilet with horizontal baffle detail, Two zippered side pockets, Warm, lightweight and water-resistant, Zip access in the lining for embroidery applications, Comes with a handy stuff sack ▪ Outer: 100% Recycled Nylon, Inner: 100% Recycled Polyester, 38gsm, 2 colours.

PR811 Men's sizes: S/35" – 4XL/53"

PR815 Women's sizes: XS/8 – 2XL/18



▪ Warm, lightweight and water-resistant



BLACK

NAVY



Comes with a handy stuff sack





'RECYCLIGHT'® PADDED JACKET

'Recyclight'® Padded Jacket ▪ Zip-through padded jacket with horizontal baffle detail, Two zippered side pockets, Warm, lightweight and water-resistant, Zip access in the lining for embroidery applications, Comes with a handy stuff sack ▪ Outer: 100% Recycled Nylon, Inner: 100% Recycled Polyester, 38gsm, 2 colours.

PR817 Men's sizes: S/35" – 4XL/53"

PR819 Women's sizes: XS/8 – 2XL/18



▪ Open pocket to the inner lining



▪ Two zippered side pockets

▪ Made from 100% recycled nylon and polyester



Comes with a handy stuff sack



NEW



PR819



PR817



PR803

PR804



'ARTISAN' FLEECE GILET

'Artisan' Fleece Gilet ■ Contrast trim detail, Zip through style with two-way zipper, External zipped side pockets, Front and back panels ■ 100% Polyester, 260gsm, 5 colours.

PR803 Men's sizes: S/34" – 3XL/54"

PR804 Women's sizes: XS/8 – 3XL/20



■ Contrast trim detail

■ Contrast loop for hanging

NEW COLOUR



Styled with PR238 & PR338 Oxford Stripes Shirts, page 37



'ARTISAN' FLEECE JACKET

'Artisan' Fleece Jacket ■ Contrast trim detail, Zip through style with two-way zipper, External zipped side pockets, Front and back panels ■ 100% Polyester, 260gsm, 5 colours.

PR823 Men's sizes: S/34" – 3XL/54" ■ **PR824** Women's sizes: XS/8 – 2XL/18



BLACK/BLACK



BLACK/BROWN



NAVY/BROWN



BURGUNDY/
BROWN



MOSS GREEN/
BROWN





PR823



PR824



NEW

SHIRTS AND BLOUSES

ELEVATE YOUR LOOK

First impressions are very important in business, so make sure that your team looks the part with a range of collared and casual shirts.

Discover men's and women's styles with long and short sleeve options across a choice of colours, fabrics and fits.





PR302

PR202





THE ORIGINAL POPLIN SHIRT

Offering quality, value and choice

Long Sleeve Poplin Shirt ■ 65% Polyester, 35% Cotton, 105gsm, 27 colours

PR200 Men's: Formal collar styling, Left chest open Mitred pocket, Double button fastening on the cuff ■ Sizes: 14.5"/ 37cm – 23"/ 56cm*

PR300 Women's: Soft collar styling, Rounded bottom hem, Styled with bust and back darts ■ Sizes: 6/2XS – 30/8XL*

Short Sleeve Poplin Shirt ■ 65% Polyester, 35% Cotton, 105gsm, 27 colours

PR202 Men's: Formal collar styling, Left chest open Mitred pocket, Self coloured buttons ■ Sizes: 14.5"/ 37cm – 23"/ 56cm*

PR302 Women's: Soft collar styling, Rounded bottom hem, Styled with bust and back darts ■ Sizes: 6/2XS – 30/8XL*

* Men's sizes 20"/50cm, 21"/52cm, 22"/54cm and 23"/56cm only available in selected colours

* Women's sizes 28/7XL and 30/8XL only available in selected colours





27

Colours

PR300

PR200

'GRANDAD' SHIRT



MODERN
FIT

Banded Collar 'Grandad' Long Sleeve Shirt ■ 65% Polyester, 35% Cotton, 115gsm, Colour: White

PR258 Men's: Classic banded 'Grandad' collar with top button fastening, Double button cuff ■ Sizes: **XS/30" – 3XL/54"**

PR358 Women's: Double button cuff and sleeve guard, Bust back darts, Pearlised buttons ■ Sizes: **XS/8 – 2XL/18**





PR305

PR204



PR305 Women's Three-Quarter Sleeve Blouse ■ Soft collar styling, Three-quarter sleeves, Styled with bust and back darts ■ 65% Polyester, 35% Cotton, 105gsm/115gsm White ■ Sizes: 6/2XS - 26/6XL (Size 6/2XS in Black & White only) ■ 7 colours



**TAILORED
FIT**

PR204 Men's Long Sleeve Slim-Fit Poplin Shirt ■ Formal collar styling, Double button fastening on the cuff, Fitted style ■ 65% Polyester, 35% Cotton, 105gsm ■ Sizes: 14.5"/37cm - 17.5"/44.5cm ■ 4 colours



**SLIM
FIT**

MODERN
FIT



STRETCH



PR244

PR344



Stretch-Fit Cotton Poplin Long Sleeve Shirt ■ 97% Cotton, 3% Elastane, 115gsm, 4 colours

PR244 Men's: Seamless placket, Cut-away collar, Two button adjustable cuff ■ Sizes: **XS/30" – 4XL/58"**

PR344 Women's: Seamless placket, Styled with bust and back darts, Two button adjustable cuff ■ Sizes: **XS/8 – 3XL/20**



STRETCH-FIT POPLIN

Stretch-Fit Cotton Poplin Short Sleeve Shirt ■ 97% Cotton, 3% Elastane, 115gsm, 4 colours

PR246 Men's: Seamless placket, Cut-away collar, Soft and stretchy fabric ■ Sizes: **XS/30"** – **4XL/58"**

PR346 Women's: Seamless placket, Styled with bust and back darts, Soft and stretchy fabric ■ Sizes: **XS/8** – **3XL/20**



PR246

PR346

SUPREME POPLIN

For a sharper silhouette

Short Sleeve Supreme Poplin Shirt ■ 65% Polyester, 35% Cotton, 125gsm, 3 colours

PR209 Men's: Offering a heavier fabric construction, Formal collar styling, Two button fastening on the collar stand ■ Sizes: 14.5"/37cm – 19"/48cm

PR309 Women's: Offering a heavier fabric construction, Styled with bust and back darts, Two button fastening on the collar stand ■ Sizes: 8/XS – 26/6XL

Long Sleeve Supreme Poplin Shirt ■ 65% Polyester, 35% Cotton, 125gsm, 3 colours

PR207 Men's: Offering a heavier fabric construction, Formal collar styling, Two button fastening on the cuff ■ Sizes: 14.5"/37cm – 19"/48cm

PR307 Women's: Offering a heavier fabric construction, Styled with bust and back darts, Two button fastening on the cuff ■ Sizes: 8/XS – 26/6XL



MODERN
FIT

EASY
CARE

40°





PR207

PR307

SUPREME POPLIN



SECURITY SHIRTS

Long Sleeve Security Shirt ■ Formal collar styling, Two Mitred button down chest pockets, Tabs for application of Epaulettes on the shoulders
■ 65% Polyester, 35% Cotton.

CLASSIC FIT

PR210 Men's: 105gsm, 3 colours ■ Sizes: 14.5"/37cm – 19"/48cm

PR310 Women's: 115gsm, *1 colour ■ Sizes: 8/XS – 26/6XL



Short Sleeve Security Shirt ■ Formal collar styling, Two Mitred button down chest pockets, Tabs for application of Epaulettes on the shoulders ■ 65% Polyester, 35% Cotton.

PR212 Men's: 105gsm, 3 colours ■ Sizes: 14.5"/37cm – 19"/48cm

PR312 Women's: 115gsm, *2 colours ■ Sizes: 8/XS – 26/6XL



SECURITY ACCESSORIES

PR700 Work Tie ■ Plain colour styling, Blade width 3.25"/8cm ■ 100% Polyester ■ Wipe clean only ■ 6 colours



PR710 Clip-on Work Tie ■ Clip-on version of PR700, Steel clip attachment, Blade width 3.25"/8cm ■ 100% Polyester ■ Wipe clean only ■ 6 colours



PR715 Epaulettes ■ Adjustable tear release fastening, Embroidery area 9cm x 5cm ■ 100% Polyester ■ Wipe clean only ■ 2 colours





Signature
OXFORD

- Highly versatile shirts for corporate or casual occasions.
- Favoured for its raised basket-woven appearance.
- Cotton for softness and polyester for durability.
- Button-down collar for classic styling.
- Offering a flattering fit which retains its shape wash after wash.



PR338

PR238

OXFORD STRIPE

Cotton Rich Oxford Stripes Shirt ■ 60% Cotton, 40% Polyester, 135gsm, 5 colours

PR238 Men's: Classic button-down collar, Contrast coloured inner neckband and cuff, Two button adjustable cuff ■ Sizes **5/34" – 3XL/54"**

PR338 Women's: Button-down collar on the underside, Contrast coloured inner neckband and cuff, Two button adjustable cuff ■ Sizes: **XS/8 – 2XL/18**





PR334

PR234



Long Sleeve Signature Oxford Shirt ■ 70% Cotton, 30% Polyester, 135gsm, 4 colours

PR234 Men's: Button-down collar, Left chest open mitred pocket, Double button cuff ■ Sizes: 14.5"/37cm – 19"/48cm

PR334 Women's: Soft collar styling, Rounded bottom hem, Double button cuff ■ Sizes: 8/XS – 26/6XL



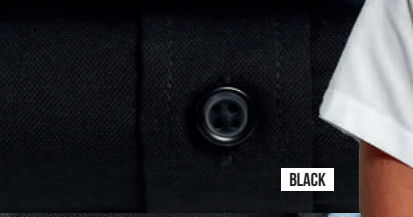
SILVER



WHITE



LIGHT BLUE



BLACK



PR336

PR236

Signature
OXFORD

Short Sleeve Signature Oxford Shirt ■ 70% Cotton, 30% Polyester, 135gsm, 4 colours

PR236 Men's: Button-down collar, Left chest open mitred pocket, Rounded bottom hem ■ Sizes: 14.5"/ 37cm – 19"/48cm

PR336 Women's: Soft collar styling, Rounded bottom hem, Bust and back darts ■ Sizes: 8/XS – 26/6XL

**MODERN
FIT**



'MAXTON' CHECK LONG SLEEVE SHIRT

'Maxton' Check Long Sleeve Shirt ▪ Button-down collar on the underside, Soft collar styling, Single button cuff ▪ 65% Polyester, 35% Cotton Yarn Dyed Poplin, 110gsm, 5 colours.

PR252 Men's sizes: S/34" – 3XL/54" ▪ **PR352** Women's sizes: XS/8 – 2XL/18



MODERN
FIT

EASY
CARE





PR252

PR352



PR221

PR321



GINGHAM COTTON SHIRTS

Long Sleeve Gingham Shirt ■ 100% Cotton Yarn Dyed Poplin, 115gsm, 4 colours

PR220 Men's: Soft collar styling, Two button adjustable cuff, Modern fit ■ Sizes: **XS/30" – 3XL/54"**

PR320 Women's: Soft collar styling, Two button adjustable cuff, Styled with bust and back darts ■ Sizes: **XS/8 – 3XL/20**

Short Sleeve Gingham Shirt ■ 100% Cotton Yarn Dyed Poplin, 115gsm, 4 colours

PR221 Men's: Soft collar styling, Curved hem, Modern fit ■ Sizes: **XS/30" – 3XL/54"**

PR321 Women's: Soft collar styling, Curved hem, Styled with bust and back darts ■ Sizes: **XS/8 – 3XL/20**



MODERN
FIT



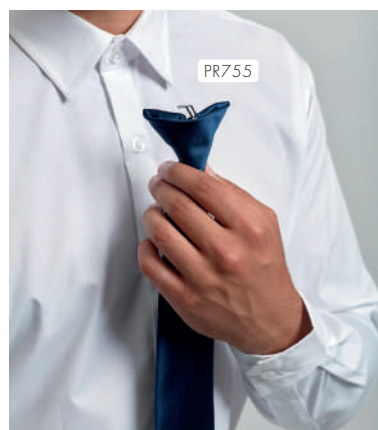
TIES AND SCARVES



PR750 'Colours Collection' Satin Tie ■ Blade width 3.34"/8.5cm, Length 57"/144cm ■ 100% Polyester ■ 40°C wash ■ 38 colours

PR740 'Colours Collection' Chiffon Scarf ■ Lightweight chiffon, Width 6.5"/16.5cm, Length 38.5"/98cm ■ 100% Polyester ■ Handwash ■ 38 colours

PR755 'Colours Collection' Clip-on Satin Tie ■ Clip-on tie, Steel clip attachment, Blade width 3.34"/8.5cm ■ 100% Polyester ■ Handwash ■ 28 colours*





38

Colours

PR750

PR740

18

Colours



MIX AND MATCH IN COLOUR



ORANGE RED BURGUNDY FUCHSIA MAGENTA PURPLE NAVY ROYAL MID BLUE TURQUOISE BLACK GREY SILVER WHITE EMERALD BOTTLE GOLD KHAKI



ORANGE RED BURGUNDY PURPLE NAVY ROYAL MID BLUE TURQUOISE BLACK GREY SILVER BOTTLE EMERALD GRASS LIME BROWN GOLD KHAKI



PR785

PR785 'Colours Originals' Clip-on

Fashion Tie ■ Clip-on tie, Steel clip attachment, Blade width 4"/10cm, Length 18"/47cm ■ 100% Polyester ■ Handwash ■ 18 colours



PR787 Puppy Tooth



PR780 Micro Waffle



PR730 'Colours Originals'

Plain Business Scarf ■ Width 10"/25cm, Length 55"/140cm, ■ 100% Polyester ■ Handwash ■ 18 colours



PR783 Waffle Stripe



PR781 Micro Dot



PR780 PR781 PR783 PR787

Patterned Ties ■ Blade width 3"/7.5cm, Length 57"/144cm ■ 100% Polyester ■ Handwash

TIES AND BOW TIES



PR782 Double Stripe

Blade width 3"/7.5cm, Length 57"/144cm ■ 100% Polyester ■ Handwash



PR784 Sports Stripe



PR705 Bow Tie ■ Satin weave
bow tie, Hook and bar fastening
■ 100% Polyester ■ Wipe clean
■ Colour: Black



PR793 Slim Tie ■ Satin weave, Blade width 2"/5cm, Length 58"/147cm ■ 100% Polyester ■ Wipe clean only

SKINNY TIES



PR789 Slim Knitted Tie ■ Blade width 2"/5cm, Length 58"/147cm ■ 100% Polyester ■ Handwash



KNITWEAR

A collection of knitwear that complements our range of shirts and blouses perfectly. Contemporary v-neck styles are made with cotton-rich yarns for a soft and comfortable layer for staff.





PR697

PR694



COTTON RICH KNITWEAR

PR694 Men's V-neck Knitted Sweater

▪ Cotton-rich long sleeve sweater, V-neck styling, Ribbed knit cuffs and hem ▪ 55% Cotton, 45% Acrylic, 12 gauge knit ▪ Sizes: **2XS/28"** – **4XL/58"** ▪ 8 colours

PR697 Women's V-neck Knitted Cardigan

▪ Cotton-rich long sleeve cardigan, Seven button fastening, Ribbed knit cuffs and hem ▪ 55% Cotton, 45% Acrylic, 12 gauge knit ▪ Sizes: **XS/8** – **5XL/24** ▪ 8 colours



Styled with PR220 &
PR320 'Microcheck'
Gingham Shirts, page 43



RED

BURGUNDY

PURPLE

ROYAL

NAVY

CHARCOAL

BLACK

BOTTLE





PR699

PR698

PR699 Men's Sleeveless Sweater ■ V-neck styling, Ribbed knit arm cuffs, neckline and hem, Cotton Rich
 ■ 55% Cotton, 45% Acrylic, 12 gauge knit ■ Sizes: **XS/30" – 4XL/58"** ■ 3 colours

PR698 Women's Long-Length Knitted Cardigan ■ V-neck styling, Seven button fastening, Two front patch pockets
 ■ 55% Cotton, 45% Acrylic, 12 gauge knit ■ Sizes: **XS/8 – 5XL/24** ■ 3 colours

PR695 Men's Quarter-Zip Knitted Sweater ■ Cotton Rich, Quarter zipped, Ribbed knit collar, cuff and hem
 ■ 55% Cotton, 45% Acrylic, 12 gauge knit ■ Sizes: **XS/30" – 4XL/58"** ■ 3 colours

PR696 Women's V-Neck Knitted Sweater ■ V-neck styling, Fine gauge knit, Cotton Rich, Ribbed knit cuffs and hem
 ■ 55% Cotton, 45% Acrylic, 12 gauge knit ■ Sizes: **XS/8 – 5XL/24** ■ 3 colours



BLACK

CHARCOAL

NAVY

PR698



PR699



PR695



PR696



PR692





PR696

PR695

CHARCOAL

NAVY

BLACK

PR692 Men's Crew-Neck Cotton Rich Knitted Sweater ▪ Fine knit, Crew-neck styling, Ribbed knit neck, hem and cuffs ▪ 55% Cotton, 45% Acrylic, 12 gauge knit ▪ Sizes: **2XS/28"** – **4XL/58"** ▪ 3 colours



'ESSENTIAL' ACRYLICS


UNIFORMS THAT WORK FOR YOU

PR400 'Essential' Acrylic Men's V-neck Sweater ▪ Ribbed knit neck, hem and cuffs, Contemporary V-neck styling, Fine knit ▪ 100% Acrylic, 12 gauge knit ▪ Sizes: **XS/30" – 5XL/62"** ▪ 2 colours

PR402 'Essential' Acrylic Women's V-neck Cardigan ▪ Ribbed knit neck, hem and cuffs, Contemporary V-neck styling, Fine knit ▪ 100% Acrylic, 12 gauge knit ▪ Sizes: **XS/8 – 2XL/18** ▪ 2 colours



PR402



PR400

EASY
CARE

40°

NAVY

BLACK

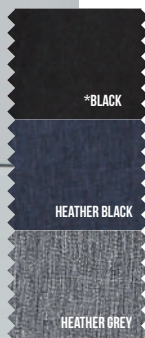
TROUSERS

FIT FOR BUSINESS

PR536 Women's Straight Leg Trousers ▪ Trouser with a deep waistband, YKK fastening zip, Cross-over waistband with two button fastening ▪ 100% Polyester, 185gsm ▪ Sizes: **XS/8** – **5XL/24**, Regular leg 31"/79 cm
*Long leg 34"/86 cm ▪ 3 colours



STRAIGHT CUT



STRAIGHT CUT

PR520 Men's Business Trousers ▪ Single pleated front, YKK zip fly with button, hook and bar fastening, Rear jettied pocket ▪ 100% Polyester, 185gsm ▪ Sizes: **30"**/76cm – **44"**/110cm, Regular leg 31"/79 cm, Long leg 34"/86 cm ▪ Colour: Black





PR570

PR560



PERFORMANCE 'CHINO' JEANS

Performance 'Chino' Jeans ■ Front and back pockets, Rivet detail, Zip fly with metal button fastening on waistband, Stretch fabric ■ Regular leg 31"/79cm, Long leg 34"/86cm ■ 63% Polyester, 35% Cotton, 2% Elastane, 260gsm, 4 colours.

PR560 Men's sizes: XS/30" – 4XL/44" ■ **PR570** Women's sizes: XS/8 – 5XL/24



CLIP-ON TROUSER BRACES

PR701 Clip-on Trousers Braces ■ Elastic 'Y' back strap braces, Three non-slip clip buckles for attachment, Fully adjustable with lock buckles ■ 60% Polyester, 40% Rubber ■ 5 colours



PERFORMANCE 'CHINO' SHORTS

Performance 'Chino' Shorts ■ Front and back pockets, Rivet detail, Covered YKK zip fly with single metal button fastening on the waistband, Stretch fabric ■ 63% Polyester, 35% Cotton, 2% Elastane, 260gsm, 2 colours.

PR562 Men's sizes: XS/30" – 4XL/44" ■ **PR572** Women's sizes: XS/8 – 5XL/24



STRETCH



NEW

PR572



PR562

WORKWEAR 'CARGO' SHORTS

NEW



PR564

PR564 Men's Workwear 'Cargo' Shorts

- Mobile friendly pockets with hook and loop sealed fastening, Belt loops, metal button and YKK zip for fastening, Single patch pocket to the reverse
- 65% Recycled Polyester, 35% Cotton, 195gsm
- Sizes: **XS/30"** – **4XL/44"** ▪ 2 colours



EASY CARE

POLO SHIRTS

Polo Shirts are a great casual alternative to a shirt with the ribbed collar meaning that this style can still be considered as smart uniform choice.



PR632



PR630



PR631

PR633



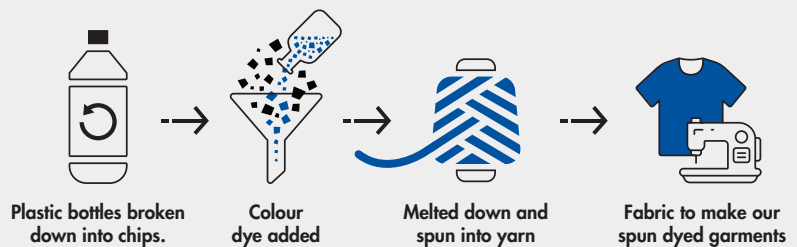
RECYCLED SPUN DYED POLO SHIRT

Spun dyeing uses less water, chemicals and carbon compared to traditional methods.

Recycled Spun Dyed Polo Shirt ■ Made with spun dyed recycled polyester yarn, Ribbed collar, Three button placket ■ 100% Recycled Polyester, 160gsm, 3 colours.

PR631 Men's sizes: S/35" – 4XL/53"

PR633 Women's sizes: XS/8 – 2XL/18





COOLCHECKER® POLO SHIRTS

Coolchecker® Pique Polo Shirt ■ Side panels for fitted shape, Moisture management wicking fabric, Three button placket, Ribbed knit collar and cuffs ■ 100% Polyester pique knit, 155gsm, 25 colours

PR615 Men's sizes: S/35" – *5XL/51"

PR616 Women's sizes: XS/8 – 2XL/18

*only available in selected colours

COOL

CHECKER®

- Allows air flow through fabric
- Drawing moisture away from the body
- Fast dry and crease resistant



25

Colours

PR615

PR616



11

Colours



PR619

PR618

COOLCHECKER[®] CONTRAST POLO SHIRTS

Contrast Tipped Coolchecker[®] Polo Shirt ▪ Contrast trim on collar, placket and sleeves, Side panels for fitted shape, Ribbed knit collar and sleeve, Three button placket
▪ 100% Polyester pique knit, 155gsm, 11 colours.

PR618 Men's sizes: S/35" – 4XL/48"

PR619 Women's sizes: XS/8 – 2XL/18

MODERN
FIT



▪ Contrast trim on collar ▪ Ribbed collar and cuff





PERFORMANCE POLO SHIRTS

Coolchecker® Plus Pique Polo - Coolplus® ■ Double pique knit for heavier construction, Coolplus® wicking yarn for breathability, Ribbed knit collar and cuffs, Three button placket, Snag and crease resistant, Silvadur™ technology for antimicrobial properties
 ■ 100% Coolplus® Polyester Pique, 185gsm, 16 colours.

PR630 Men's sizes: S/35" – *6XL/59" **PR632** Women's sizes: XS/8 – **4XL/22

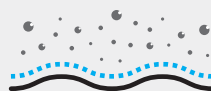
*and **only available in selected colours



Air
flows through the fabric



Moisture
drawn away from skin



Fabric
that uses surface dimensional
channel technology.



antimicrobial

which releases silver ions that
destroy the bacteria that
causes odour, material
degradation and discolouration.

16

Colours



PR632

PR630

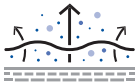
PREMIER[®]

UNIFORMS THAT WORK FOR YOU



PR617

COOL
CHECKER[®]



- Allows air flow through fabric
- Drawing moisture away from the body
- Fast dry and crease resistant



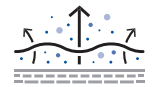
LONG SLEEVE COOLCHECKER[®] POLO SHIRT

PR617 Long Sleeve Coolchecker[®] Pique Polo ■ Ribbed knit collar and cuffs, Moisture management wicking fabric, Three button placket
■ 100% Polyester Pique, 155gsm ■ Sizes: XS/33" – 4XL/48" ■ 40°C wash ■ 2 colours

PR612



COOL
CHECKER®



- Allows air flow through fabric
- Drawing moisture away from the body
- Fast dry and crease resistant



SNAP BUTTON FASTENING

PR612 Coolchecker® Studded Polo ■ Two pop stud fastening on the placket, Wicking properties, Self-fabric collar ■ 100% Polyester pique, 140gsm ■ Sizes: **XS/33"** – **3XL/50"** ■ 6 colours



STUDDED POLO



PR610 Studded Polo ■ Three pop stud placket, Extra body length, Durable pique knit ■ 65% Polyester, 35% Cotton, 200gsm
■ Sizes: S/34" – 3XL/52" ■ 50°C wash ■ 4 colours

'ESSENTIAL' HEAVYWEIGHT POLO SHIRTS



PR995 'Essential' Unisex Short Sleeve Workwear Polo Shirt ■ Antimicrobial textile technology designed to kill microbes on the fabric surface, Ribbed knit collar and sleeve cuff, Two button placket, Extra body length ■ 65% Polyester, 35% Cotton, powered by HeiQ Viroblock, 200gsm ■ Sizes: S/35" – 4XL/53" ■ 5 colours

PR997 'Essential' Unisex Long Sleeve Workwear Polo Shirt ■ Antimicrobial textile technology designed to kill microbes on the fabric surface, Ribbed knit collar and sleeve cuff, Two button placket, Extra body length ■ 65% Polyester, 35% Cotton, powered by HeiQ Viroblock, 200gsm ■ Sizes: S/35" – 4XL/53" ■ 2 colours



HEIQ VIROBLOCK



Powered by HeiQ Viroblock, a world-leading innovative Swiss textile technology.

CASUAL SHIRTS & TEES

FOR AN EFFORTLESS SERVICE

Create a relaxed approach to service by providing your team with a shirt or tee that is comfortable to wear and still looks great! The rustic colour palette of our shirts gives off some great vintage vibes, whilst our collection of tees look great when paired with one of our artisan aprons.





PR247



PR347



CHAMBRAY SHIRT ORGANIC & FAIRTRADE CERTIFIED

Garments that display the Fairtrade Cotton[®] mark are made from cotton that is Fairtrade certified. This certification means cotton has been traded, audited and sourced from Fairtrade producers.

Chambray Shirt - Organic & Fairtrade Certified ▪ Two chest pockets with combined pen pocket to the left ▪ Double button cuff for adjustment with a single button sleeve guard ▪ Button-down collar on the underside ▪ 100% Organic Cotton, Fairtrade Certified, 160gsm, 2 colours

PR247 Men's sizes: S/34" – 3XL/54" ▪ **PR347** Women's sizes: XS/8 – 3XL/20



Certifies 100% OCS Com-Flax Organically Grown in Conformance with standards established by Control Union. Licence: 1192936



PR222

PR322

JEAN STITCH DENIM SHIRTS

Jean Stitch Denim Shirt ■ 100% Cotton Ring Spun Denim, 155gsm, 2 colours

PR222 Men's: Contrast stitch details, Left chest button-down chest pocket, Buttoned cuff and sleeve guard ■
Sizes: **XS/30" – 3XL/54"**

PR322 Women's: Contrast stitch details, Two button-down chest pockets, Buttoned cuff and sleeve guard ■
Sizes: **XS/8 – 3XL/20**



MODERN
FIT

100%
COTTON

'GINMILL' CHECK SHIRTS

MODERN
FIT



'Ginmill' Check Long Sleeve Cotton Shirt ▪ Roll-sleeve option with button fastening on the upper arm, Narrow soft collar styling, Curved hem ▪ 100% Cotton Yarn Dyed Poplin, 115gsm, 1 colour.

PR254 Men's sizes: S/34" – 3XL/54" ▪ **PR354** Women's sizes: XS/8 – 2XL/18



▪ Soft collar styling



BLACK/WHITE



'MULLIGAN' CHECK SHIRTS

'Mulligan' Check Long Sleeve Shirt ▪ Roll-sleeve option with button fastening on the upper arm, Narrow soft collar styling, Curved hem ▪ 100% Cotton Yarn Dyed Poplin, 115gsm, 4 colours.

PR250 Men's sizes: S/34" – 3XL/54" ▪ **PR350** Women's sizes: XS/8 – 2XL/18



▪ 100% Cotton Yarn Dyed Poplin fabric

▪ Roll-sleeve option with button and tab fastening





PR317

PR217

40°

'CROSS-DYE' BAR SHIRT

Roll-Sleeve 'Cross-Dye' Poplin Shirt

- 65% Polyester, 35% Cotton, 105gsm, 2 colours

PR217 Men's: Soft collar styling, Cross-dye textured fabric appearance, Roll-up sleeve with button fastening on the upper arm ▪ Sizes: **XS/30"** – **3XL/54"**

PR317 Women's: Soft collar styling, Cross-dye textured fabric appearance, Bust and back darts ▪ Sizes: **XS/8** – **3XL/20**



GREY DENIM

INDIGO DENIM

- Roll-up sleeve with button fastening



ROLL-SLEEVE BAR SHIRT

Roll-Sleeve Poplin Shirt ■ Button fastening on upper arm, Left chest vented pocket, Soft collar styling ■ 65% Polyester, 35% Cotton, 105gsm, 1 colour.

PR206 Men's sizes: S/34" – 2XL/50" ■ **PR306** Women's sizes: XS/8 – 2XL/18

**TAILORED
FIT**



PR206

PR306



■ Left chest vented pocket

■ Roll-up sleeve



WAISTCOATS

FOR A REFINED SERVICE

Hospitality Waistcoat ■ 65% Polyester, 35% Cotton, 195gsm, Colour: Black

PR620 Men's: Self-fabric back, Two functional watch pockets, Five button fastening ■ Sizes: **S/36" – 2XL/52"**

PR621 Women's: Self-fabric back, Two functional watch pockets, Four button fastening ■ Sizes: **S/10 – 2XL/18**

Lined Polyester Waistcoat ■ 100% Polyester, 185gsm, Colour: Black

PR622 Men's: Satin back with adjuster, Two functional watch pockets, Five button fastening ■ Sizes: **2XS/30" – 2XL/52"**

PR623 Women's: Satin back with adjuster, Two functional watch pockets, Four button fastening ■ Sizes: **2XS/6 – 2XL/18**





PR625

PR626



▪ Brown Check

▪ Charcoal

▪ Navy

HERRINGBONE WAISTCOAT

Herringbone Waistcoat ▪ Satin lining to the underside and reverse, Lapel collar, Adjusting buckle on the back ▪ 50% Wool, 45% Polyester, 5% mixed fibres, 300gsm, 3 colours.

PR625 Men's sizes: XS/32" – 2XL/52"

PR626 Women's sizes: XS/8 – 2XL/18

Styled with PR258 & PR358 'Banded Collar
'Grandad' Shirts, page 28

'COMIS' COTTON-RICH TEE

These styles represent our commitment to buying cotton through the Better Cotton™ initiative.

'Comis' Cotton-Rich Tee ■ Narrow banded collar, placket with single mental button, soft feel
■ 60% Cotton, 40% Recycled Polyester, 160gsm. **Grey Marl:** 90% Cotton, 10% Viscose, 160gsm, 5 colours

PR219 Men's sizes: S/34" – 3XL/54"

PR319 Women's sizes: XS/8 – 2XL/18



Contains 40% RCS Certified Recycled Post-Consumer Polyester
Certified by Control Union
CS-CUC-1119378

† Grey Marl does not contain recycled polyester





PR219



PR319



 **PREMIER**®

UNIFORMS THAT WORK FOR YOU



PR218

PR318



'LONG-JOHN' ROLL-SLEEVE TEE

'Long-John' Roll-Sleeve Tee ■ Roll-sleeve with button and tab fastening on the upper arm, Round neck with three button placket, Ribbed bound neck and cuffs ■ 82% Polyester, 14% Viscose, 4% Elastane, 190gsm, 5 colours.

PR218 Men's sizes: XS/30" – 3XL/54" ■ **PR318** Women's sizes: XS/8 – 2XL/18



BLACK

GREY MARL

INDIGO

WHITE/NAVY

WHITE



ARTISAN APRONS

FASHION AT THE FRONT-OF-HOUSE

Make sure your front-of-house teams are ready to serve in style with our collection of artisan inspired aprons.

Designed for practicality with a keen eye on fashion, these aprons offer something special for venues who want to invest in their staff and make a great impression with customers.





PR121

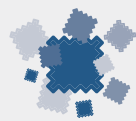
'REGENERATE' BIB APRON

Recycled cotton from used denim

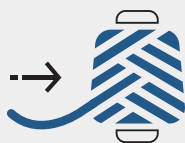
PR122 'Regenerate' Bib Apron ■ Slanted side pockets with contrast trim, Adjustable knotted neckband, Contrast stitching, Recycled cotton from used denim,
Black Denim: 53% Recycled Cotton, 41% Recycled Polyester, 6% Recycled Viscose,
Indigo Denim: 58% Recycled Cotton, 36% Recycled Polyester, 6% Recycled Viscose,
Grey Denim: 55% Recycled Cotton, 36% Recycled Polyester, 9% Recycled Viscose,
Natural: 44% Recycled Cotton, 37% Recycled Polyester, 19% Recycled Viscose,
275gsm ■ 4 colours



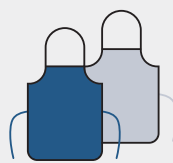
Used denim



Shredded up and broken down



Spun back into yarns



Fabric to make our aprons



PR122



JEAN STITCH DENIM APRONS

PR126 Jean Stitch Denim Bib Apron ▪ Four 'kangaroo' style pockets with rivet detail, Adjustable buckle on neck band, Width 72cm, length 86cm ▪ 70% Cotton, 30% Polyester, 265gsm ▪ 2 colours



▪ Buckle on neckband



▪ Contrast stitching on Indigo Denim



PR125 Jean Stitch Denim Waist Apron ▪ Four 'kangaroo' style pockets with rivet detail, Contrast stitch detail, Length 39.5cm ▪ 70% Cotton, 30% Polyester, 265gsm ▪ 2 colours





PR126



PR125



PR127

PR128

CONTRAST DENIM

PR127 'Domain' Contrast Denim Bib Apron ▪ Neckband with buckle fastening for height adjustment, Centre pocket with contrast trim, including pen compartment, Metal eyelets secure 100cm contrast fabric ties ▪ 70% Cotton, 30% Polyester, 265gsm ▪ 2 colours

PR128 'Domain' Contrast Denim Waist Apron ▪ Mid-length waist Apron measuring 50cm long by 70cm wide, Centre pocket with contrast trim, including pen compartment, Metal eyelets secure 100cm contrast fabric ties ▪ 70% Cotton, 30% Polyester, 265gsm ▪ 2 colours



▪ Adjustable buckle



▪ Contrast pocket with rivet detail





PR136

PR135

PR134





WAXED-LOOK COTTON APRONS

PR134 'District' Waxed-Look Bib Apron ■ Durable waxed look finish, Oversized jean style pocket with stitch and rivet detail, Contrast colour ties secured in place with metal eyelets, Fabric features including, patch pocket and cloth holder ■ 100% Cotton Denim with Acrylic 'Waxed Look' Coating, 350gsm ■ 2 colours

PR135 'Division' Waxed-Look Waist Apron ■ Durable waxed look finish giving a water repellent surface, Contrast fabric features for function and decoration, Oversized jean style pocket with stitch rivet detail, Contrast colour ties secured in place with metal eyelets ■ 100% Cotton Denim with Acrylic 'Waxed Look' coating, 350gsm ■ 4 colours

PR136 'Division' Waxed-Look Bib Apron with Faux Leather ■ Durable waxed look finish giving a water repellent surface, Contrast fabric features for function and decoration, Faux leather ties and neckband with adjustable buckle, Tinted denim effect created by contrast coloured yarns ■ 100% Cotton Denim with Acrylic 'Waxed Look' coating, 350gsm ■ 4 colours



PREMIER[®]

UNIFORMS THAT WORK FOR YOU



PR113

BROWN DENIM

INDIGO DENIM

BLACK DENIM

- Antique brass/gunmetal buckle



DENIM COTTON BIB APRON - ORGANIC & FAIRTRADE CERTIFIED

PR113 Denim Cotton Bib Apron - Organic & Fairtrade Certified ▪ Two mitred pockets measuring 20cm deep x 19.5cm wide, Antique brass/gunmetal buckle on neckband for height adjustment, 80cm long x 72cm wide with 107cm long ties, Care label printed on the underside that highlights the eco-friendly properties of this style ▪ 100% Cotton, Organic & Fairtrade Certified, 235gsm ▪ 3 colours



Certifies 100% OCS Car+Rec Organically Grown by Certifying Partner
Certified by Control Union
© 2016 CONTROL UNION





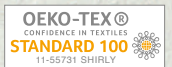
'METRO' HIP APRON

PR138 'Metro' Utility Hip Apron ■ Tablet-friendly jeans style riveted pocket, Zip-fastening pocket, Adjustable self-fabric waistband with carabiner fastener ■ 100% Cotton Canvas, 320gsm. Denim: 70% Cotton, 30% Polyester, 265gsm ■ 4 colours



'CHINO' COTTON APRON

PR132 'Chino' Bib Apron ■ Full bib Apron measuring 86cm long by 72cm wide, 'Chino' style stitched pockets with rivets, Neckband with buckle and adjustable snap button fastening ■ 100% Cotton, 235gsm ■ 4 colours

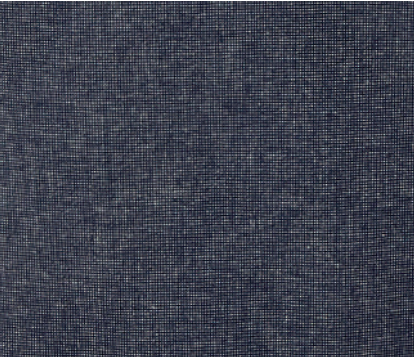




PR144



BLACK



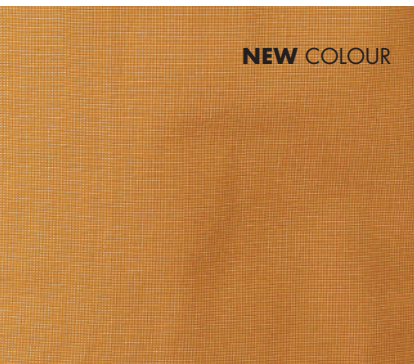
NAVY



BURGUNDY



MOSS



NEW COLOUR

MUSTARD

'ANNEX' OXFORD BIB APRONS

PR144 'Annex' Oxford Bib Apron ▪ Faux leather neckband with buckle and rivet detail, Faux leather cloth holder and side tabs with rivet detail, Centre pocket, Double D-ring fastening to the waist ▪ 100% Cotton Yarn Dyed Oxford Weave, 220gsm ▪ 5 colours



Styled with PR319 'Comis' Tee, page 86

'CALIBRE' COTTON CANVAS APRONS

PR130 'Calibre' Heavy Cotton Canvas Bib Apron ▪ Full bib Apron measuring 86cm long by 72cm wide, Heavyweight and durable, Oversized eyelet for knotted neckband ▪ 100% Cotton Canvas, 320gsm ▪ 8 colours

PR131 'Calibre' Heavy Cotton Canvas Waist Apron ▪ Mid-length waist Apron measuring 50cm long by 70cm wide, Heavyweight and durable, Metal eyelets secure 90cm self fabric waist ties ▪ 100% Cotton Canvas, 320gsm ▪ 8 colours



▪ Oversized eyelet for neckband



BLACK

NAVY

DARK GREY

SILVER

NATURAL

KHAKI

BURGUNDY

RED



PR131

PR130

PR137

PR137 'Calibre' Heavy Cotton Canvas Pocket Apron ■ Four 'kangaroo' style stitched pockets, Oversized eyelet for knotted neckband, Heavyweight and durable ■ 100% Cotton Canvas, 320gsm ■ 8 colours



PR121



‘BARLEY’ CONTRAST STITCH BIB APRON

These styles represent our commitment to buying cotton through the Better Cotton™ initiative.

- PR121** ‘Barley’ Contrast Stitch Bib Apron ■ Eyelet and rivet detail, Adjustable antique brass buckle on neckband, Side pockets and centre zipped pocket, Contrast stitching
 ■ 65% Recycled Polyester, 35% Cotton, 195gsm ■ 4 colours



■ Contrast stitching



'ESPRESSO' BIB APRON



PR123 'Espresso' Bib Apron ■ Faux leather trim and neckband, Press stud buttons on neckband for height adjustment, Two handy pleat pockets measuring 13cm
■ 65% Polyester, 35% Cotton with faux leather trim, 195gsm ■ 4 colours



■ Faux leather trim



■ Two handy pleat pockets





PR129

OEKO-TEX®
CONFIDENCE IN TEXTILES
STANDARD 100
11-55731 SHIRLY



BLACK FAUX LEATHER



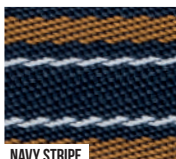
BLACK REVERSE DENIM



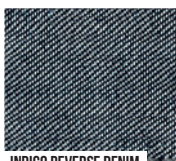
BROWN STRIPE



BROWN FAUX LEATHER



NAVY STRIPE



INDIGO REVERSE DENIM



PR119

CROSS-BACK 'BARISTA' BIB APRON

PR129 Cross-Back 'Barista' Bib Apron ■ Supplied with self-fabric straps, Alternative interchangeable straps available (PR119), Front centre pocket with built-in pen slot ■ Canvas: 100% Cotton, 320gsm. Denims: 70% Cotton, 30% Polyester, 265gsm ■ 8 colours

Choose alternative Apron straps for an individual look

PR119 Cross-Back Interchangeable Apron Straps ■ Alternative straps for PR129 Cross Back 'Barista' Bib Apron, Fixed with a buckle fastener to hook on to the main body of the apron, Measuring 170cm x 3cm ■ Striped: 100% Polyester. Denim: 70% Cotton, 30% Polyester. Faux Leather: 100% Polyurethane ■ Colour: 6 as listed



BLACK

NAVY

INDIGO DENIM

BLACK DENIM

GREY DENIM

DARK GREY

KHAKI

SILVER

20

Colours



PR102





100% ORGANIC COTTON BIB APRON

Made with 100% in conversion Organically Grown Cotton.

Supporting farmers through the transition period from conventional to organic cotton crop production.

PR102 100% Organic Cotton Bib Apron ■ Self-fabric ties, Self-fabric neckband, Width 60cm, Length 87cm ■ 100% Cotton - Organic Certified, 240gsm ■ 20 colours



Certified by Control Union
CB-CUC1119398



Styled with PR219 'Comis' Tee, page 86



PR112



PR114



COTTON APRONS - ORGANIC & FAIRTRADE CERTIFIED

PR112 Cotton Bib Apron, Organic & Fairtrade Certified ■ Sliding adjustable buckle on neckband, Centre pocket, Width 60cm, Length 84cm ■ 100% Cotton - Fairtrade Certified, 200gsm ■ Colour: Black

PR114 Cotton Waist Apron, Organic & Fairtrade Certified ■ 90cm self-fabric ties, Width 70cm, Length 50cm ■ 100% Cotton - Fairtrade Certified, 200gsm ■ Colour: Black



Certified 100% OCS Certified Organically
Grown by Cottonex Cotton
Certified by Control Union
© C.U.C. 100/000



PR120



INCLUDES



RECYCLED POLYESTER & ORGANIC COTTON APRON

PR120 Recycled Polyester and Cotton Bib Apron, Organic & Fairtrade Certified ■ Two slanted side pockets measuring 24cm depth by 18cm wide, Adjustable buckle on neckband, Care label printed on the underside that highlights the eco-friendly properties of this style ■ 65% Recycled Polyester, 35% Cotton, Organic & Fairtrade Certified, 280gsm ■ 5 colours



Certified by Control Union
CB-CUC-1119398



PR120

GRAIN HOUSE
ORGANIC RESTAURANT

PR121

GRAIN HOUSE

PR122

GRAIN HOUSE
ORGANIC RESTAURANT

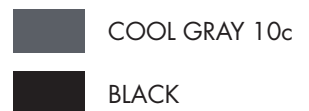
A BRANDING OPPORTUNITY

When choosing uniforms for your business, you should take inspiration from your branding, interiors and furnishings and choose a colour scheme that complements these key areas. Focus on one or two colours and work this through your reception, front-of-house and kitchen teams for a seamless look that instils confidence from customers.



YOUR COLOUR SCHEME

Pick a shade that complements your branding.



THE 'COLOURS COLLECTION'

COLOUR THAT FEEDS YOUR SOUL

Feast your eyes on the industry's biggest collection of coloured aprons with bib, pocket and waist styles in up to 62 colours.

These aprons are excellent value for money and are built to last with fabrics that offer durability and excellent colour fastness wash after wash.



62 COLOURS





PR150

PR219



PR158



PR154

PR319

62

Colours

PR150



'COLOURS COLLECTION' BIB APRON

PR150 'Colours Collection' Bib Apron ■
 Adjustable buckle on neckband, Self-fabric ties,
 Two sizes available ■ 65% Polyester, 35%
 Cotton, 195gsm. Denim: 70% Cotton, 30%
 Polyester, 265gsm ■ Size: 86cm x 72cm

*Extra large size: 102cm x 91cm
 (Black and White only)



STEEL

CORNFLOWER	ROYAL	MARINE BLUE
NAVY	INDIGO DENIM	BLUE DENIM
CYAN	LIGHT BLUE	PEACOCK
MID BLUE	SAPPHIRE	LILAC
LAVENDER	PURPLE	RICH VIOLET
AUBERGINE	FUCHSIA	MAGENTA
PINK	ROSE	HOT PINK
RASPBERRY CRUSH	BURGUNDY	RED
SALSA	STRAWBERRY RED	ORANGE
TERRACOTTA	CHESTNUT	BROWN
MOCHA	MUSHROOM	LATTE
KHAKI	NATURAL	CAMEL
MUSTARD	SUNFLOWER	YELLOW
LEMON	LIME	OASIS GREEN
OLIVE	MOSS GREEN	AQUA
DUCK EGG BLUE	TURQUOISE	TEAL
EMERALD	KELLY	PISTACHIO
APPLE	BOTTLE	SAGE
WHITE*	BLACK DENIM	GREY DENIM
SILVER	STEEL	CHARCOAL
DARK GREY	BLACK*	

50

Colours



PR154



PR151



36

Colours

NEW
COLOURS

PR151 'Colours Collection' Mid-Length

Apron ■ Mid-length waist apron, 90cm self fabric ties, Width 70cm, length 50cm ■ 65% Polyester, 35% Cotton, 195gsm ■ 36 colours*

PR154 'Colours Collection' Bib Apron

with Pocket ■ Sliding adjustable buckle on neck band, Width 72cm, length 86cm, Tablet friendly centre pocket with combined pen slot ■ 65% Polyester, 35% Cotton, 195gsm ■ 50 colours



BURGUNDY	RED	FUCHSIA	HOT PINK	STRAWBERRY RED	ORANGE	TERRACOTTA	SUNFLOWER
BROWN	PINK	ROSE*	MOCHA	CHESTNUT	CAMEL*	NATURAL	*LEMON
AUBERGINE	LILAC*	MID BLUE*	LIGHT BLUE*	SLIVER	LATTE*	KHAKI	WHITE
PURPLE	RICH VIOLET	SAPPHIRE	AQUA	APPLE	LIME	OASIS GREEN	SAGE
MARINE BLUE	BLUE DENIM*	TURQUOISE	DUCK EGG*	TEAL	EMERALD	MOSS GREEN*	OLIVE
NAVY	INDIGO DENIM*	ROYAL	BOTTLE	CHARCOAL*	STEEL	DARK GREY	GREY DENIM*
BLACK DENIM*	BLACK						
NEW				NEW			NEW

*PR151 not available in these colours



24
Colours

INDIGO DENIM* NEW	BLUJE DENIM* NEW	TURQUOISE	AQUA	EMERALD	BOTTLE
NAVY	ROYAL	PURPLE	FUCHSIA	HOT PINK	BURGUNDY
LIME	NATURAL	PINK	SUNFLOWER	ORANGE	RED
SAGE	OLIVE	KHAKI			
BROWN	BLACK DENIM* NEW	BLACK			
DARK GREY	GREY DENIM* NEW				
SILVER	WHITE				

28
Colours



NEW
COLOURS



POCKET WAIST APRONS

PR155 'Colours Collection' 3 Pocket Waist Apron ■ Three open pockets: 90cm self-fabric ties, Width 60cm, length 33cm ■ 65% Polyester, 35% Cotton, 195gsm ■ 28 colours

PR158 'Colours Collection' Bar Apron with Pocket ■ Tablet friendly centre pocket with combined pen slot, 90cm self-fabric ties, Width 80cm, length 90cm ■ 65% Polyester, 35% Cotton, 195gsm ■ 24 colours*

*PR158 not available in these colours



CONTRAST APRONS

PR162 'Colours Collection' Contrast Bib Apron ■ Colour contrasting vertical panel, Sliding adjustable buckle on neckband, Two front slanted pockets ■ 65% Polyester, 35% Cotton, 195gsm ■ 7 colours



7

Colours

PR162



PR105

ZIP POCKET WAIST APRON

PR105 Zip Pocket Waist Apron ■ Two zipped closed pockets, Centre open pocket, Width 60cm, length 33cm ■ 65% Polyester, 35% Cotton, 195gsm ■ Colour: Black



Two zipped pockets

85°

OEKO-TEX®
CONFIDENCE IN TEXTILES
STANDARD 100
11-55731 SHIRLY

CHILDREN'S APRON

PR149 'Colours Collection' Children's Bib Apron ■ Safety release mechanism on neckband, Infant sizing: 43cm wide, 53cm long, Junior sizing: 48 wide, 63cm long ■ 65% Polyester, 35% Cotton, 195gsm ■ Sizes: Infant 3-6 years, Junior 7-10 years ■ 16 colours



16
Colours



10
Colours

2 IN 1 APRON

PR159 'Colours Collection' 2-in-1 Apron ■ One apron worn two ways, Bib and waist apron styles, Pocket features on both styles ■ 65% Polyester, 35% Cotton, 195gsm ■ 10 colours



Can be worn as a bib apron, doubles over and neck ties are secured away to form a waist apron.



'ANTIMICROBIAL' APRON


PREMIER®
UNIFORMS THAT WORK FOR YOU

PR996 'Antimicrobial' Apron ▪ Antimicrobial textile technology designed to kill microbes, germs and bacteria on the fabric surface, Buckle on the neckband for height adjustment, 86cm long x 72cm wide, Self fabric ties
▪ 65% Polyester, 35% Cotton, powered by HeiQ Viroblock, 195gsm ▪ 5 colours



HEIQ
VIROBLOCK

Powered by HeiQ Viroblock, a world-leading innovative Swiss textile technology.

ECONOMY APRONS

PR165 'Essential' Bib Apron ■ Classic bib apron,
Width 67cm, length 78cm, 75cm self-fabric ties ■
*Black: 80% Polyester, 20% Cotton. Colours: 65%
Polyester, 35% Cotton, 170gsm ■ 6 colours



6

Colours



PR167 Polyester Bib Apron ■ Adjustable sliding buckle on neckband, Width 72cm, length 86cm, 90cm self-fabric ties
■ 100% Polyester, 195gsm ■ 4 colours



PR145 Children's Waterproof Apron ■ Safety release mechanism on neckband, Waterproof fabric, 50cm self-fabric ties ■ 100% Polyester with Polyurethane coating, 110gsm ■ Sizes: Infant 3-6 years, Junior 7-10 years ■ 8 colours



8
Colours



WATERPROOF APRONS

PR115 Waterproof Bib Apron ■ Adjustable buckle on neckband, Waterproof and bleach resistant fabric, 90cm self fabric ties ■ 100% Polyester with Polyurethane coating, 110gsm ■ 8 colours





WATERPROOF WRAP AROUND TUNIC

PR174 Waterproof Wrap Around Tunic ■ Waterproof and bleach resistant, V-neck styling, Double centre pocket, Flattering feminine fit measuring 86cm in length
■ 100% Polyester with Polyurethane coating, 110gsm
■ Sizes: **S-M/10-12, L-XL/14-16** ■ 4 colours



'TULIP' WRAP AROUND TUNIC

PR177 'Tulip' Wrap-Around Tunic ■ Over-the-head style, V-neck styling, Centre patch pocket ■ 100% polyester, 185gsm ■ Sizes: **S-M/10-12, L-XL/14-16** ■ 4 colours



FASTENING TIP

Bring the ties from back to front and tie round your waist on the underside, then take front ties and fasten at the back.



TABARDS

PR172 Long Length Pocket Tabard ■ Pull-on coverall with a length of 78cm, Side tabs with adjustable press stud fastening, Centre pocket ■ 65% Polyester, 35% Cotton, 195gsm ■ Sizes: S/10 – XL/16 ■ 3 colours



PR171 Pocket Tabard ■ Pull-on overall with a length of 68cm, Side tabs with adjustable press stud fastening, Centre pocket ■ 65% Polyester, 35% Cotton, 195gsm ■ Sizes: **S/10 – 3XL/20** ■ 18 colours



18

Colours

PR171



CHEFSWEAR

UNIFORMS FOR THE PROFESSIONALS

For those who work in commercial kitchens and food service we offer a collection of professional clothing designed for protection and hygiene with a sprinkling of style.

Long and short sleeve chef's jackets are complemented by trousers and headwear options, all available in classic black and white with an offering of denim for some vintage vibes in the kitchen.





PR664

PR665



PR906

ZIPPED CHEF'S JACKETS

PR906 Chef's Zip-Close Short Sleeve

Jacket ▪ Zip through fastening, Double pen pocket on left sleeve, Colour contrast underarm, Mandarin collar ▪ White: 65% Polyester, 35% Cotton, 170gsm, Denim: 60% Cotton, 40% Polyester, 230gsm ▪ Sizes: **XS/30" – 2XL/50"** ▪ 3 colours



WHITE

INDIGO DENIM

BLACK DENIM



EASY CARE



PR906

▪ Zip through fastening

▪ Loop for hanging

▪ Underarm colour contrast on denims





PRESS-STUD JACKETS



BLACK

WHITE



BLACK

WHITE

PR664 Short Sleeve Studded Chef's Jacket ■ Mandarin collar, Ten press-stud fastening, Wrap over style
■ 65% Polyester, 35% Cotton, 195gsm ■ Sizes: **XS/30"** – **3XL/54"** ■ 2 colours

PR665 Long Sleeve Studded Chef's Jacket ■ Mandarin collar, Ten press-stud fastening, Wrap over style
■ 65% Polyester, 35% Cotton, 195gsm ■ Sizes: **XS/30"** – **3XL/54"** ■ 2 colours



PR664



PR665



DENIM CHEF'S JACKET

PR660 Denim Chef's Jacket ▪ Cotton rich chef's jacket, Cross-over front fastening, Ten press-stud fastening ▪ 60% Cotton, 40% Polyester, 230gsm
▪ Sizes: XS/30" – 3XL/54" ▪ 2 colours



'ESSENTIAL' CHEF'S JACKETS

PR900 'Essential' Short Sleeve Chef's Jacket ▪ Five button wrap over fastening, Long life resin buttons, Mandarin collar ▪ 65% Polyester, 35% Cotton, 170gsm ▪ Sizes: **XS/30"** – **4XL/58"** ▪ 2 colours



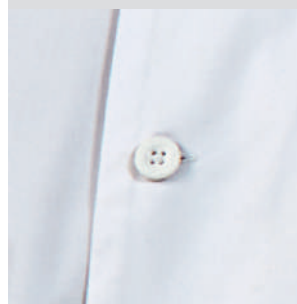
PR900



▪ Double pen pocket



▪ Long life resin buttons



OEKO-TEX®
CONFIDENCE IN TEXTILES
STANDARD 100
11-05/31 SHIRLEY

BLACK



WHITE



BLACK



WHITE





PR901

EASY
CARE

85°

PR901 'Essential' Long Sleeve Chef's Jacket ■ Five button wrap over fastening, Long life resin buttons, Double pen pocket on left sleeve, Mandarin collar ■ 65% Polyester, 35% Cotton, 170gsm ■ Sizes: **XS/30" – 4XL/58"** ■ 2 colours



PR656



PR657



CLASSIC CHEF'S JACKETS

PR656 Short Sleeve Chef's Jacket ▪ Ten button hole wrap over fastening, Double pen pocket on left sleeve, Mandarin collar
 ▪ 65% Polyester, 35% Cotton, 195gsm ▪
 Sizes: **XS/30" – 4XL/58"** ▪ 3 colours

PR657 Long Sleeve Chef's Jacket ▪ Ten button hole wrap over fastening, Mandarin collar
 ▪ 65% Polyester, 35% Cotton, 195gsm ▪
 Sizes: **XS/30" – 4XL/58"** ▪ 3 colours



BLACK



BLACK



STEEL



STEEL



WHITE



WHITE



EASY CARE



PR656



COOLCHECKER® CHEF'S JACKETS

PR902 Coolchecker® Short Sleeve Chef's Jacket

Coolchecker® fabric mesh back panel, Double pen pocket on left sleeve, Self-fabric ten button fastening

▪ 65% Polyester, 35% Cotton, 170gsm ▪ Sizes: XS/30" – 2XL/50" ▪ 2 colours

PR903 Coolchecker® Long Sleeve Chef's Jacket

Coolchecker® fabric mesh back panel, Double pen pocket on left sleeve, Self-fabric ten button fastening

▪ 65% Polyester, 35% Cotton, 170gsm ▪ Sizes: XS/30" – 2XL/50" ▪ 2 colours



EASY
CARE



Coolchecker® fabric mesh back panel and loop for hanging



WHITE



BLACK





PR903

PR902



WHITE

BLACK

Coolchecker® fabric mesh back panel





PR670



PR671



- Ten button hole wrap over fastening
- Double pen pocket on left sleeve

WOMEN'S STYLES

PR670 Women's Short Sleeve Chef's Jacket ▪ Ten button hole wrap over fastening, Double pen pocket on left sleeve, Back panels for a more fitted style ▪ 65% Polyester, 35% Cotton, 195gsm ▪ Sizes: XS/8 – 2XL/18 ▪ 1 colour

PR671 Women's Long Sleeve Chef's Jacket ▪ Ten button hole wrap over fastening, Double pen pocket on left sleeve, Back panels for a more fitted style ▪ 65% Polyester, 35% Cotton, 195gsm ▪ Sizes: XS/8 – 2XL/18 ▪ 1 colour



WHITE



EASY CARE



LONG SLEEVE 'CUISINE' CHEF'S JACKET

PR661 Long Sleeve 'Cuisine' Chef's Jacket ▪ Mandarin collar, Comes with Black removable studs (other colours available, see page 145), Ten hole wrap fastening ▪ 65% Polyester, 35% Cotton, 195gsm ▪ Sizes: XS/30" – 4XL/58" ▪ 2 colours



**EASY
CARE**



CHEF'S T-SHIRT

PR649 Chef's Coolchecker® T-Shirt ▪ Crew neck styling, Coolchecker® fabric back panel, Underarm vent holes, Double pen pocket on left sleeve ▪ 100% Polyester, 135gsm ▪ Sizes: XS/30" – 3XL/54" ▪ 2 colours



**MODERN
FIT**



▪ Underarm vent holes

**COOL®
CHECKER**

CHEF'S ACCESSORIES



PR653 Chef's Skull Cap

- Flat top, Elasticated fit, One size fits all
- 65% Polyester, 35% Cotton, 195gsm. Denim: 60% Cotton, 40% Polyester, 230gsm
- 9 colours



PR110 Striped Bib Apron

- Butcher's style apron, 90cm self-fabric ties and neck band, Width 72cm, length 101cm
- 100% Cotton, 240gsm. Black/Grey: 65% Polyester, 35% Cotton, 195gsm
- 3 colours



[†]BLACK/WHITE

BLACK/GREY

[†]NAVY/WHITE





PR648

PR648 Turn Up Chef's Hat ▪ Turn up double edge band, Five eyelets for ventilation, Four sizes available ▪ 65% Polyester, 35% Cotton, 195gsm ▪ Sizes: S 54cm, M 57cm, L 60cm, XL 63cm ▪ 2 colours



WHITE

BLACK

PR658 Chef's Zandana ▪ Two ties at the back, Elasticated fit, Neck flap ▪ 65% Polyester, 35% Cotton, 195gsm ▪ 2 colours



BLACK

WHITE



PR658



PR652

PR652 Chef's Jacket Studs ▪ Removable studs, For use with PR661 Cuisine Chef's Jacket (pg 143), Sold in bags of 12 ▪ Durable plastic, Wipe clean ▪ 3 colours



BLACK

NAVY

WHITE

CHEF'S TROUSERS



BLACK & WHITE CHECK



*BLACK



BLACK



NAVY & WHITE CHECK



BLACK & WHITE CHECK

PR554 Chef's 'Select' Slim Leg Trousers ■ Fitted style on lower leg, Patch pocket on right leg, Elasticated waist with draw cord and zip fly fastening ■ 65% Polyester, 35% Cotton, 195gsm ■ Sizes: **XS/28"** – **2XL/44"** ■ 1 colour



PR552 Pull-On Chef's Trousers ■ Elasticated waist, Zip fly, 30.5"/77cm inside leg ■ 65% Polyester, 35% Cotton, 195gsm ■ Sizes: **XS/28"** – **2XL/44"** ■ 2 colours



PR553 'Essential' Chef's Trousers ■ Elasticated waist, Swing pockets, 30.5"/77cm inside leg ■ 65% Polyester, 35% Cotton, 195gsm ■ Sizes: **XS/28"** – ***4XL/48"** ■ 2 colours

*only available in Black





PR556

BLACK DENIM



PR555

BLACK



BLACK DENIM

INDIGO DENIM

PR556 | Chef's 'Artisan' Jogger Bottoms ■ Cuffed ankle, Elasticated waistband, draw cord and belt loops, Soft and stretchy fabric ■ 87% Cotton, 12% Polyester, 1% Elastane, 230gsm ■ Sizes: **XS/28" – 2XL/44"** ■ 2 colours



PR555 | 'Essential' Chef's Cargo Pocket Trousers ■ Two mobile friendly cargo pockets, Elasticated waistband, Draw cord ■ 65% Polyester, 35% Cotton, 195gsm ■ Sizes: **XS/28" – 3XL/46"** ■ 1 colour



■ Two cargo pockets



BEAUTY & SALONWEAR

YOUR TIME TO SHINE

When clients attend their beauty and well-being appointments, they expect to be greeted by well-presented staff.

Discover a collection of stunning beauty tunics to help elevate your look, along with essential waterproof styles and suitable choices for healthcare professionals.





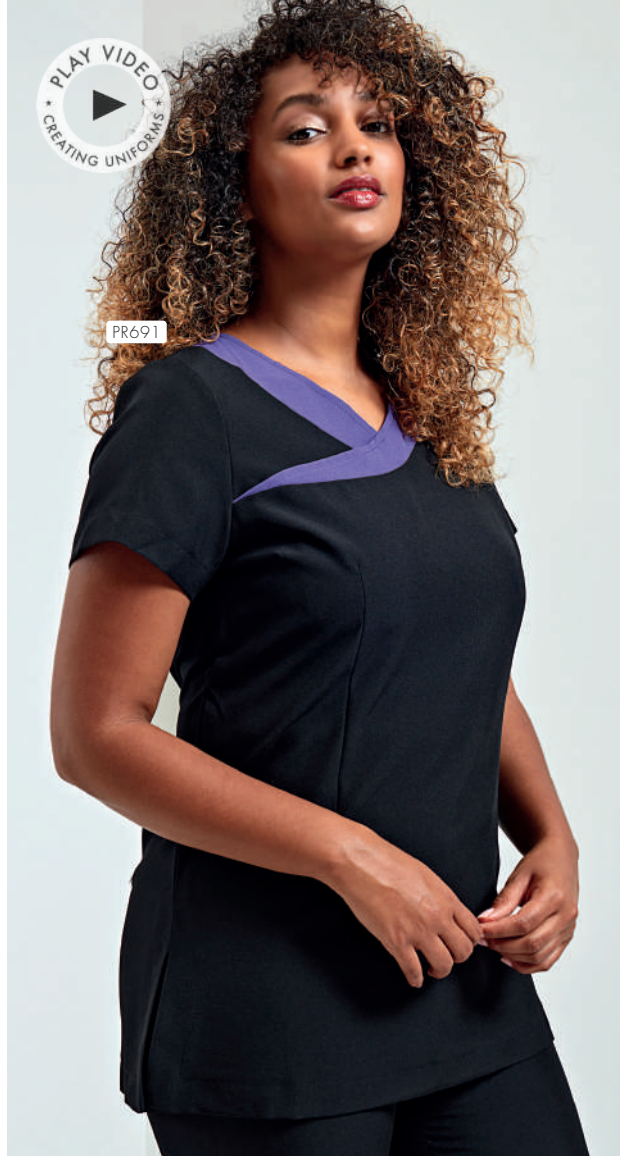
PR683



PR686



PR691



Camellia

PR686 Feature Zip Tunic

- Flattering feminine fit with bust and back darts, Cross over neckline, Pull-on style with front feature zip
- 100% Polyester, 185gsm
- Sizes: **2XS/6 – 5XL/24**
- 1 colour

BLACK & BLACK



Ivy

PR691 Contrast Neck Tunic

- Flattering feminine fit with bust and back darts, Crossover neckline with contrast coloured trim, Pull-on style with back zip fastening
- 100% Polyester, 185gsm
- Sizes: **2XS/6 – 5XL/24**
- 4 colours

STRAWBERRY RED & BLACK

HOT PINK & BLACK

PURPLE & BLACK

TURQUOISE & BLACK



EASY CARE





Blossom

PR683

PR683 Asymmetric Button Tunic ■

Flattering feminine fit with bust and back darts, Mandarin collar, Concealed zip through fastening and press stud ■ 100% Polyester, 185gsm ■ Sizes: **2XS/6** – **5XL/24**
■ 7 colours



EASY
CARE



Orchid

12

Colours

PR682 Beauty & Spa Tunic ■ Flattering feminine fit with bust and back darts, Mandarin collar, Eight 'bar' button fastening ■ 100% Polyester, 185gsm ■ Sizes: **2XS/6 – 5XL/24** ■ 12 colours

PR682





Rose

PR690 Wrap Satin Trim Tunic

- Flattering feminine fit with bust and back darts, Satin trim creating the illusion of a wrap tunic, Pull-on style with back zip fastening
- 100% Polyester, 185gsm
- Sizes: **2XS/6 – 5XL/24**
- 1 colour



Mika

PR681 Feature Button Tunic

- Flattering feminine fit with bust and back darts, Four sparkly feature buttons embellished on the trim, Pull-on style with back zip fastening
- 100% Polyester, 185gsm
- Sizes: **2XS/6 – 5XL/24**
- 1 colour



STRAIGHT
FIT



PR536



PR688



Iris

PR536 Women's Straight Leg Trousers ■ Trousers with a deep waistband, YKK fastening zip, Cross over waistband with two button fastening ■ 100% Polyester, 185gsm ■ Sizes: **XS/8 – 5XL/24**, Regular leg 31"/79 cm, *Long leg 34"/86 cm ■ 3 colours



Viola

PR688 Linen-Look V-Cut Beauty Tunic ■ Open pockets to the sides, Round neck with v-cut, Concealed zip back ■ 100% Polyester, 160gsm ■ Sizes: **XS/8 – 5XL/24** ■ 2 colours



EASY
CARE



Verbena

PR685 Linen-Look Button-Up

Beauty Tunic ■ Banded style collar, Buttoned placket, Three quarter sleeves ■ 100% Polyester, 160gsm ■ Sizes: **XS/8 – 5XL/24**
■ 2 colours



LINEN-LOOK FABRIC

PR685



HEATHER GREY



HEATHER BLACK

Salon Essentials



WATERPROOF



BLEACH
RESISTANT



PR115 Waterproof Bib Apron ■ Adjustable buckle on neckband, Waterproof and bleach resistant, 90cm self fabric ties ■ 100% Polyester with Polyurethane coating, 110gsm ■ 8 colours



PR116 Waterproof Salon Gown ■ Suitable for salons and barbers, 145cm long by 123cm wide, Waterproof and bleach resistant, Adjustable tear release fastening at the back
■ 100% Polyester with Polyurethane coating, 110gsm ■ 2 colours



Waterproof, bleach resistant salon gowns

PR117 Long Sleeve Waterproof Salon Gown ■ Waterproof and bleach resistant for use in salons and barbers, Elasticated cuffs, Adjustable tear release fastening ■ 100% Polyester with Polyurethane coating, 110gsm ■ 1 colour



Healthcare Uniforms



PR605 'Daisy' Healthcare Tunic ■ V-neck styling, Concealed zip fastening with press stud, Two curved front pockets, Contrast trim on neckline, sleeves and pockets ■ 65% Polyester, 35% Cotton, 195gsm ■ Sizes: **XS/8 – 5XL/24** ■ 2 colours



PR605

PR514 'Poppy' Healthcare Trouser ■ Cross over waistband with two button fastening, Zip fly, Belt loops, Two slanted front pockets ■ 65% Polyester, 35% Cotton, 195gsm ■ Sizes: **XS/8 – 5XL/24** ■ 1 colour



PR514



PR604 'Vitality' Healthcare Tunic ■ Soft collar styling, Concealed zip fastening and press stud, Two slanted front pockets, Contrast trim on neckline, sleeves and pockets ■ 65% Polyester, 35% Cotton, 195gsm ■ Sizes: **XS/8 – 5XL/24** ■ 3 colours



PR604



SIZING

MODERN
FIT

TAILORED
FIT

CLASSIC
FIT

SLIM
FIT

WOMEN'S SHIRTS / POLOS / TEES / KNITWEAR / CHEF'S JACKETS / BEAUTY TUNICS & OUTERWEAR

Call size	2XS	XS	S	M	L	XL	2XL	3XL	4XL	5XL	6XL	7XL	8XL
Size	6	8	10	12	14	16	18	20	22	24	26	28	30
Bust to fit "	31	33	35	37	39	41	43	45	47	49	51	53	55
Bust to fit cm	79	84	89	94	99	104	109	114	119	124	129	134	139

WOMEN'S WAISTCOATS - PR621, PR623 & PR626

Call size	2XS	XS	S	M	L	XL	2XL
Size	6	8	10	12	14	16	18
Bust to fit "	27	29	32	34	37	40	44
Bust to fit cm	72	80	88	96	104	112	120

WOMEN'S TROUSERS, CHINOS & SHORTS - PR514, PR530, PR536, PR570 & PR572

Call size	XS	S	M	L	XL	2XL	3XL	4XL	5XL
Size	8	10	12	14	16	18	20	22	24
Waist to fit "	24	26	28	30	32	34	36	38	40
Waist to fit cm	59	64	69	74	79	84	89	94	99

MEN'S COLLARED SHIRTS

PR200, PR202, PR204, PR207, PR209, PR210, PR212, PR234 & PR236

Call size	S	S/M	M	M/L	L	L/XL	XL	XL/2XL	2XL	2XL/3XL	3XL	4XL	5XL	6XL
Collar "	14½	15	15½	16	16½	17	17½	18	18½	19	20	21	22	23
Collar cm	37	38	39½	41	42	43	44½	46	47	48	50	52	54	56
Chest to fit "	34	36	38	40	42	44	46	48	50	52	54	58	62	66
Chest to fit cm	87	92	96	102	107	111	117	122	127	132	137	147	157	167

MEN'S SOFT COLLARED SHIRTS, TEES, CHEF'S JACKETS, KNITWEAR & ARTISAN FLEECEES

PR206, PR217, PR218, PR219, PR220, PR221, PR222, PR238, PR244, PR246, PR247, PR250, PR252, PR254, PR258, PR649, PR803 & PR823

Call size	2XS	XS	S	M	L	XL	2XL	3XL	4XL	5XL
Chest to fit "	28	30	34	38	42	46	50	54	58	62
Chest to fit cm	74	77	87	96	107	117	126	136	146	156

MEN'S WAISTCOATS - PR620, PR622 & PR625

Call size	2XS	XS	S	M	L	XL	2XL
Chest to fit "	30	32	36	40	44	46	52
Chest to fit cm	66	76	86	96	106	116	126

STUDED POLO, COOLPLUS POLO, SPUN DYED POLO, ESSENTIAL POLOS, ZIP-THROUGH SWEAT, SOFTSHELLS & RECYCLIGHTS - PR612, PR630, PR631, PR995, PR997, PR808, PR810, PR811, PR814 & PR817.

Call size	XS	S	M	L	XL	2XL	3XL	4XL	5XL	6XL
Chest to fit "	33	35	38	41	44	47	50	53	56	59
Chest to fit cm	83	89	96	104	112	119	122	134	142	150

MEN'S COOLCHECKER POLO SHIRTS - PR615, PR617 & PR618

Call size	XS	S	M	L	XL	2XL	3XL	4XL	5XL
Chest to fit "	33	35	37	39	41	44	46	48	51
Chest to fit cm	83	89	94	99	104	112	116	122	130

STUDED POLO SHIRT - PR610

Call size	S	M	L	XL	2XL	3XL
Chest to fit "	34	38	42	46	50	52
Chest to fit cm	92	100	108	116	124	132

MEN'S TROUSERS, CHINOS & SHORTS - PR520, PR560, PR562 & PR564

Call size	XS	S	M	L	XL	2XL	3XL	4XL
Waist to fit "	30	32	34	36	38	40	42	44
Waist to fit cm	76	80	86	92	96	100	106	110

UNISEX CHEF'S TROUSERS - PR552, PR553, PR554, PR555 & PR556

Call size	XS	S	M	L	XL	2XL	3XL	4XL
Waist to fit "	28-30	32-34	34-36	36-38	38-40	42-44	44-46	46-48
Waist to fit cm	71-76	81-86	86-91	91-96	96-101	106-111	111-116	116-126



INDEX



SHIRTS & TEES

PR200	Men's Long Sleeve Poplin Shirt	26
PR202	Men's Short Sleeve Poplin Shirt	26
PR204	Men's Long Sleeve Fitted Poplin Shirt	29
PR206	Men's Roll Sleeve Poplin Bar Shirt	83
PR207	Men's Poplin Supreme Long Sleeve Shirt	32
PR209	Men's Poplin Supreme Short Sleeve Shirt	32
PR210	Men's Long Sleeve Security Shirt	34
PR212	Men's Short Sleeve Security Shirt	35
PR217	Men's Cross-Dye Roll Sleeve Poplin Bar Shirt	82
PR218	Men's Long-John Roll Sleeve Tee	89
PR219	Men's 'Comis' Cotton Rich Tee	86
PR220	Men's Long Sleeve Gingham Cotton Microcheck Shirt	43
PR221	Men's Short Sleeve Gingham Cotton Microcheck Shirt	43
PR222	Men's Jean Stitch Denim Shirt	79
PR234	Men's Long Sleeve Signature Oxford Shirt	38
PR236	Men's Short Sleeve Signature Oxford Shirt	39
PR238	Men's Cotton Rich Oxford Stripes Shirt	37
PR244	Men's Stretch Fit Cotton Poplin Long Sleeve Shirt	30
PR246	Men's Stretch Fit Cotton Poplin Short Sleeve Shirt	31
PR247	Men's Cotton Chambray Shirt - Fairtrade & Organic Cert.	77
PR250	'Mulligan' Check - Men's Long Sleeve Cotton Shirt	81
PR252	'Maxton' Check - Men's Long Sleeve Shirt	40
PR254	'Ginmill' Check - Men's Long Sleeve Cotton Shirt	80
PR258	Men's Banded Collar 'Grandad' Long Sleeve Shirt	28
PR300	Women's Long Sleeve Poplin Blouse	26
PR302	Women's Short Sleeve Poplin Blouse	26
PR305	Women's Poplin 3/4 Sleeve Blouse	29
PR306	Women's Roll-Sleeve Poplin Bar Shirt	83
PR307	Women's Poplin Supreme Long Sleeve Shirt	32
PR309	Women's Poplin Supreme Short Sleeve Shirt	32
PR310	Women's Long Sleeve Security Shirt	34
PR312	Women's Short Sleeve Security Shirt	35
PR317	Women's Cross-Dye Roll Sleeve Poplin Bar Shirt	82
PR318	Women's Long John Roll Sleeve Tee	89
PR319	Women's 'Comis' Cotton Rich Tee	86
PR320	Women's Long Sleeve Gingham Microcheck Shirt	43
PR321	Women's Short Sleeve Gingham Microcheck Shirt	43
PR322	Women's Jean Stitch Denim Shirt	79
PR334	Women's Long Sleeve Signature Oxford Blouse	38
PR336	Women's Short Sleeve Signature Oxford Blouse	39
PR338	Women's Cotton Rich Oxford Stripes Shirt	37
PR344	Women's Stretch-Fit Cotton Poplin Long Sleeve Shirt	30
PR346	Women's Stretch-Fit Cotton Poplin Short Sleeve Shirt	31
PR347	Women's Cotton Chambray Shirt - Fairtrade & Organic Cert.	77
PR350	'Mulligan' Check-Women's Long Sleeve Cotton Shirt	81
PR352	'Maxton' Check - Women's Long Sleeve Shirt	40
PR354	'Ginmill' Check-Women's Long Sleeve Cotton Shirt	80
PR358	Women's Banded Collar 'Grandad' Shirt	28

OUTERWEAR

PR803	Men's 'Artisan' Fleece Gilet	21
PR804	Women's 'Artisan' Fleece Gilet	21
PR808	Men's Spun Dyed Recycled Zip-Through Sweat	14
PR809	Women's Spun Dyed Recycled Zip-Through Sweat	14
PR810	Men's Windchecker® Printable & Recycled Softshell Jacket	10
PR811	Men's 'Recyclight' Padded Gilet	17
PR812	Women's Windchecker® Printable & Recycled Softshell Jacket	10
PR814	Men's Windchecker® Printable & Recycled Gilet	13
PR815	Women's 'Recyclight' Padded Gilet	17
PR816	Women's Windchecker® Printable & Recycled Gilet	13
PR817	Men's 'Recyclight' Padded Jacket	18
PR819	Women's 'Recyclight' Padded Jacket	18
PR823	Men's 'Artisan' Fleece Jacket	22
PR824	Women's 'Artisan' Fleece Jacket	22

WAISTCOATS

PR620	Men's Hospitality Waistcoat	84
PR621	Women's Hospitality Waistcoat	84
PR622	Men's Lined Polyester Waistcoat	84
PR623	Women's Lined Polyester Waistcoat	84
PR625	Men's Herringbone Waistcoat	85
PR626	Women's Herringbone Waistcoat	85

TIES & SCARVES

PR700	Plain Work Tie	35
PR705	Bow Tie	48
PR710	Clip-on Work Tie	35
PR715	Epaulettes	35
PR730	'Colours Originals' Plain Business Scarf	47
PR740	'Colours Collection' Plain Chiffon Scarf	44
PR750	'Colours Collection' Satin Tie	44
PR755	'Colours Collection' Satin Clip-on Tie	44
PR765	'Colours Originals' Fashion Tie	47
PR780	Micro Waffle Tie	47
PR781	Micro Dot Tie	47
PR782	Double Stripe Tie	48
PR783	Waffle Stripe Tie	47
PR784	Sports Stripe Tie	48
PR785	'Colours Originals' Fashion Clip-on Tie	47
PR787	Puppy Tooth Tie	47
PR789	Slim Knitted Tie	48
PR793	Slim Tie	48

TROUSERS, CHINO JEANS & SHORTS

PR520	Men's Business Trousers	55
PR536	Women's Straight Leg Trousers	55
PR560	Men's Performance Chino Jeans	57
PR562	Men's Performance Chino Shorts	58
PR564	Men's Workwear Cargo Shorts	60
PR570	Women's Performance Chino Jeans	57
PR572	Women's Performance Chino Shorts	58
PR701	Clip-on Trousers Braces	57

KNITWEAR

PR400	'Essential' Acrylic Men's V-Neck Sweater	54
PR402	'Essential' Acrylic Women's Cardigan	54
PR692	Men's Crew Neck Cotton Rich Knitted Sweater	53
PR694	Men's Knitted V-Neck Sweater	51
PR695	Men's Quarter-Zip Knitted Sweater	52
PR696	Women's Knitted V-Neck Sweater	52
PR697	Women's Button-Through Knitted Cardigan	51
PR698	Women's Long Length Knitted Cardigan	52
PR699	Men's V-Neck Sleeveless Sweater	52

POLO SHIRTS

PR610	Studded Polo Shirt	72
PR612	Coolchecker® Studded Polo Shirt	71
PR615	Men's Coolchecker® Pique Polo Shirt	64
PR616	Women's Coolchecker® Pique Polo Shirt	64
PR617	Men's Long Sleeve Coolchecker® Pique Polo Shirt	70
PR618	Men's Contrast Tipped Coolchecker® Polo Shirt	67
PR619	Women's Contrast Tipped Coolchecker® Polo	67
PR630	Men's Coolchecker® Plus Pique Polo - Coolplus™	68
PR631	Men's Spun Dyed Recycled Polo Shirt	63
PR632	Women's Coolchecker® Plus Pique Polo - Coolplus™	68
PR633	Women's Spun Dyed Recycled Polo Shirt	63
PR995	'Essential' Unisex Short Sleeve Polo Shirt	73
PR997	'Essential' Unisex Long Sleeve Polo Shirt	73

APRONS

PR102	100% Cotton Bib Apron - Organic Cert.	111
PR105	Zip Pocket Waist Apron	122
PR110	Striped Bib Apron	144
PR112	Cotton Bib Apron - Fairtrade Cert.	112
PR113	Cotton Denim Bib Apron - Organic & Fairtrade Cert.	100
PR114	Mid Length Cotton Apron - Fairtrade Cert.	112
PR115	Waterproof Bib Apron	126
PR119	Cross Back Interchangeable Apron Straps	109
PR120	Recycled Polyester & Cotton Bib Apron - Organic & Fairtrade Cert.	113
PR121	'Barley' Contrast Stitch Bib Apron	107
PR122	'Regenerate' Bib Apron	92
PR123	'Espresso' Bib Apron	108
PR125	Jean Stitch Denim Waist Apron	94

PR126	Jean Stitch Denim Bib Apron	94
PR127	'Domain' Contrast Denim Bib Apron	97
PR128	'Domain' Contrast Denim Waist Apron	97
PR129	Cross Back 'Barista' Bib Apron	109
PR130	'Calibre' Heavy Cotton Canvas Bib Apron	104
PR131	'Calibre' Heavy Cotton Canvas Waist Apron	104
PR132	'Chino' Bib Apron	101
PR134	'District' Waxed Look Denim Bib Apron	99
PR135	'Division' Waxed Look Denim Waist Apron	99
PR136	'Division' Waxed Look Denim Bib Apron with Faux leather	99
PR137	'Calibre' Heavy Cotton Canvas Pocket Apron	105
PR138	'Metro' Utility Hip Apron	101
PR144	'Annex' Oxford Bib Apron	103
PR145	Children's Waterproof Apron	126
PR149	Children's Bib Apron	123
PR150	'Colours Collection' Bib Apron	119
PR151	'Colours Collection' Mid Length Apron	120
PR154	'Colours Collection' Bib Apron with Pocket	120
PR155	'Colours Collection' Three Pocket Apron	121
PR158	'Colours Collection' Bar Apron with Pocket	121
PR159	'Colours Collection' 2 in 1 Apron	123
PR162	'Colours Collection' Contrast Bib Apron	122
PR165	'Essential' Bib Apron	125
PR167	Polyester Bib Apron	125
PR996	Antimicrobial Bib Apron	124

TABARDS

PR171	Pocket Tabard	129
PR172	Long Length Pocket Tabard	128
PR174	Waterproof Wrap Around Tunic	127
PR177	'Tulip' Wrap Around Tunic	127

CHEFSWEAR

PR552	Chef's Pull-on Trousers	146
PR553	'Essential' Chef's Trousers	146
PR554	Chef's Slim Fit Trousers	146
PR555	'Essential' Chef's Cargo Pocket Trousers	147
PR556	Artisan Chef's Jogging Trousers	147
PR648	Turn-up Chef's Hat	145
PR649	Coolchecker® Chef's T-shirt	143
PR652	Chef's Jacket Studs	145
PR653	Chef's Skull Cap	144
PR656	Short Sleeve Chef's Jacket	139
PR657	Long Sleeve Chef's Jacket	139
PR658	Chef's Zandana	145
PR660	Chef's Denim Jacket	135
PR661	Chef's Long Sleeve 'Cuisine' Jacket	143
PR664	Chef's Short Sleeve Stud Jacket	134
PR665	Chef's Long Sleeve Stud Jacket	134
PR670	Women's Short Sleeve Chef's Jacket	142
PR671	Women's Long Sleeve Chef's Jacket	142
PR900	'Essential' Short Sleeve Chef's Jacket	136
PR901	'Essential' Long Sleeve Chef's Jacket	137
PR902	Chef's Short Sleeve Coolchecker® Jacket	140
PR903	Chef's Long Sleeve Coolchecker® Jacket	140
PR906	Chef's Zip-Close Short Sleeve Jacket	133

BEAUTY, SALONWEAR & HEALTHCARE

PR115	Waterproof Bib Apron	156
PR116	Waterproof Salon Gown	157
PR117	Long Sleeve Waterproof Gown	157
PR514	Women's 'Poppy' Healthcare Trousers	158
PR536	Women's 'Iris' Straight Leg Trousers	154
PR604	'Vitality' Healthcare Tunic	159
PR605	'Daisy' Healthcare Tunic	158
PR681	'Mika' Beauty and Spa Tunic	153
PR682	'Orchid' Beauty and Spa Tunic	152
PR683	'Blossom' Beauty and Spa Tunic	151
PR685	'Verbena' Linen Look Button Up Beauty Tunic	155
PR686	'Camellia' Beauty and Spa Tunic	150
PR688	'Viola' Linen Look Cut Neck Beauty Tunic	154
PR690	'Rose' Beauty and Spa Tunic	153
PR691	'Ivy' Beauty and Spa Tunic	150

THE COLLECTION

- BUSINESSWEAR
- HOSPITALITYWEAR
- OUTERWEAR
- CHEFSWEAR
- BEAUTY & SALON
- HEALTHCARE

